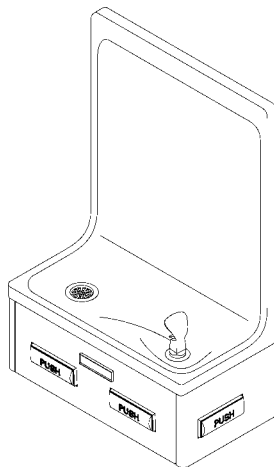


Halsey Taylor Owners Manual

Wall Mount Fountain



INSTALLER

Halsey Taylor Fountains are among the easiest to install Fountains on the market today. To assure you install these models easily and correctly, PLEASE READ THESE SIMPLE INSTRUCTIONS BEFORE STARTING THE INSTALLATION. CHECK YOUR INSTALLATION FOR COMPLIANCE WITH PLUMBING, ELECTRICAL, AND OTHER APPLICABLE CODES. After installation, leave these instructions with the Fountain for future reference.

IMPORTANT

ALL SERVICE TO BE PERFORMED BY AN AUTHORIZED SERVICE PERSON

IMPORTANT! INSTALLER PLEASE NOTE.

THE GROUNDING OF ELECTRICAL EQUIPMENT SUCH AS TELEPHONE, COMPUTERS, ETC. TO WATER LINES IS A COMMON PROCEDURE. THIS GROUNDING MAY BE IN THE BUILDING OR MAY OCCUR AWAY FROM THE BUILDING. THIS GROUNDING CAN CAUSE ELECTRICAL FEEDBACK INTO A FOUNTAIN, CREATING AN ELECTROLYSIS WHICH CAUSES A METALLIC TASTE OR AN INCREASE IN THE METAL CONTENT OF THE WATER. THIS CONDITION IS AVOIDABLE BY USING THE PROPER MATERIALS AS INDICATED. ANY DRAIN FITTINGS PROVIDED BY THE INSTALLER SHOULD BE MADE OF PLASTIC TO ELECTRICALLY ISOLATE THE FOUNTAIN FROM THE BUILDING PLUMBING SYSTEM.

1. Water supply 3/8" O.D. unplated copper tube. Waste 1-1/4" O.D. Contractor to supply waste trap and service stop valve in accordance with local code.
2. Connecting lines to be made of unplated copper and should be thoroughly flushed to remove all foreign matter before being connected to fountain. This fountain is manufactured in such a manner that it does not in any way cause taste, odor, color, or sediment problems.
3. These products are designed to operate on 20 psig to 105 psig supply line pressure. If inlet pressure is above 105 psig, a pressure regulator must be installed in the supply line. Any damage caused by reason of connecting this product to supply line pressures lower than 20 psig or higher than 105 psig is not covered by warranty.

ROUGH-IN DIMENSIONS

LEGEND:

- A = RECOMMENDED WATER SUPPLY LOCATION,
3/8 O.D. UNPLATED COPPER TUBE CONNECT.
- B = RECOMMENDED LOCATION FOR
WASTE OUTLET, 1-1/4" O.D. DRAIN.
- C = 1-1/4" TRAP NOT FURNISHED.
- D = MOUNTING HOLES FOR BASIN
HANGER STRAP.
- E = MOUNTING HOLES FOR FOUNTAIN

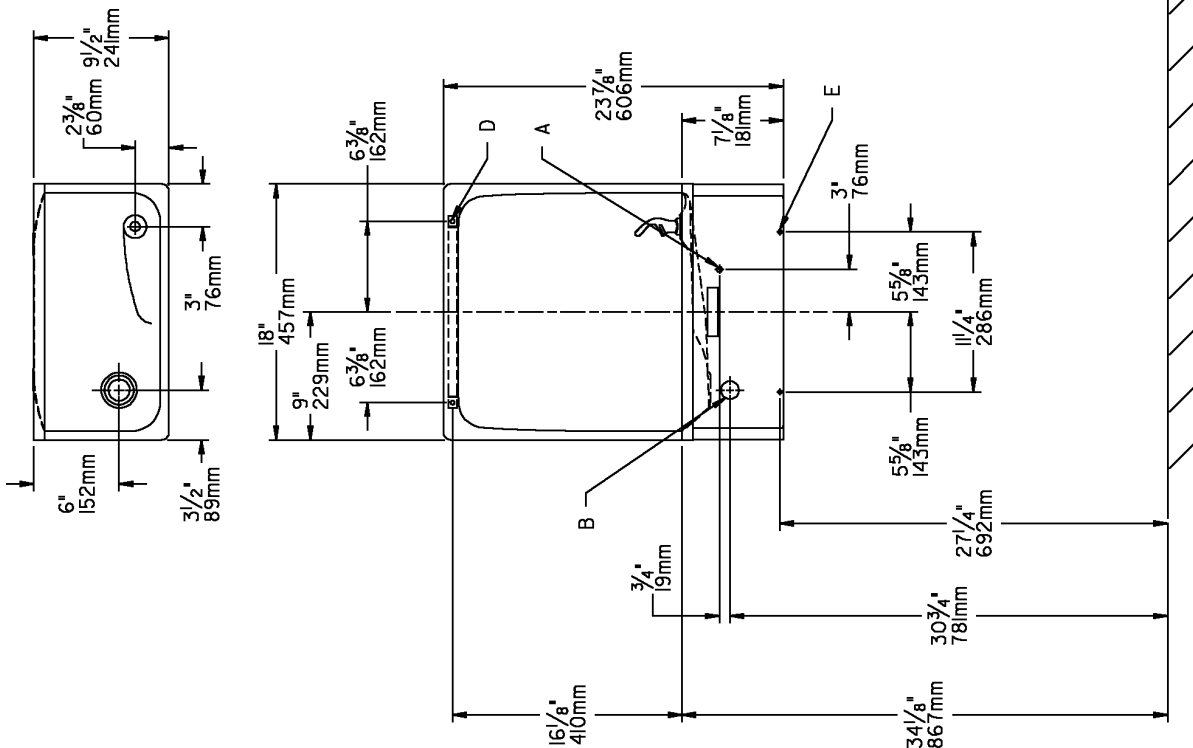


FIG. 1

FINISHED FLOOR
PISO ACABADO
PLACHER FINI

HANGER BRACKET AND TRAP INSTALLATION

1. Mount the hanger bracket and trap as shown in Fig 1.

NOTE: Hanger bracket **MUST** be supported securely. Add fixture support carrier if wall will not provide adequate support.

IMPORTANT:

- 5-5/8" dimension from centerline of unit to centerline of trap must be maintained for proper fit.
- Anchor hanger securely to wall using all mounting holes.

INSTALLATION OF FOUNTAIN

2. Hang the fountain on the hanger bracket. Be certain the hanger bracket is engaged properly in the basin.

3. Remove the access panel on the underside of the fountain and set aside.

4. Install a 3/8" O.D. unplated copper water line between the service stop valve and fountain. Remove burr from outside of water line. Insert the 3/8" O.D. water line to a positive stop approximately 3/4 inch (See figures 2 and 3). **DO NOT SOLDER TUBES INSERTED INTO THE STRAINER AS DAMAGE TO THE O-RINGS MAY RESULT.**

5. **NOTE:** If required, the 1/4 O.D. water inlet line to fountain may be cut to a desired length. However, if water line is cut, all burrs must be removed from outside of tube before inserting into the strainer.

6. Remove the slip nut and gasket from the trap and install them on the fountain waste line, making sure that the end of the waste line fits into the trap. Assemble the slip nut and gasket to the trap and tighten securely.

START UP

7. Turn on the building water supply and check all connections for leaks.

8. Depress push bar until all air is bled from fountain water system. A steady stream flow assures all air is removed.

9. Stream height is factory set at 45-50 PSI. If supply pressure varies greatly from this, readjust stream height to approximately 1-1/2" above the bubbler guard by turning adjustment screw, accessible by removing front push panel. (See Fig. 4 & 5)

10. Recheck all water and drain connections with water flowing through system.

11. Replace the access panel and secure by re-tightening all screws.

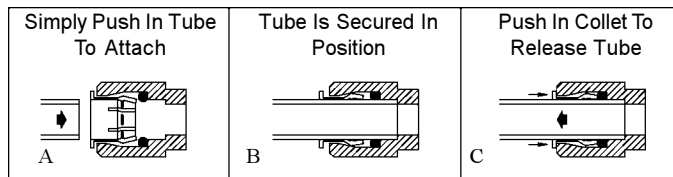
12. Water Valve Mechanism

ADJUSTMENT PROCEDURE:

- Turn adjustment screw "Counter-clockwise" until water flow from bubbler starts.
- Turn adjustment screw "Clockwise" until water flow stops, then turn an additional 1/2 turn.

NOTE: Adjustments stated above are as viewed from underneath unit.

OPERATION OF QUICK CONNECT FITTINGS



Pushing Tube In Before Pulling It Out Helps To Release Tube.

FIG. 2

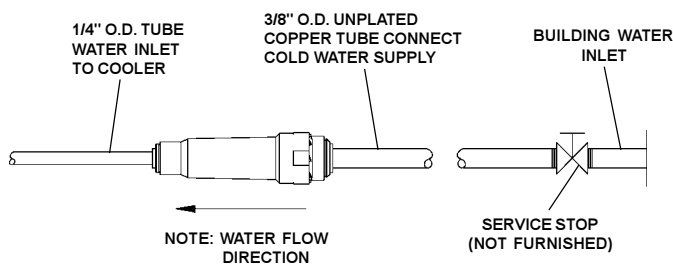
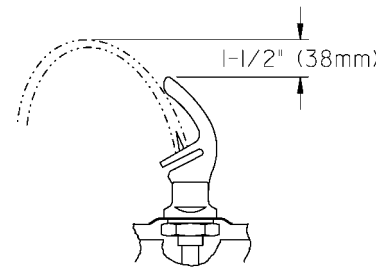


FIG. 3



CORRECT STREAM HEIGHT

FIG. 4

5701*C FOUNTAIN

ITEMIZED PARTS LIST

ITEM NO.	PART NO.	DESCRIPTION
1	15005C	Retaining Nut
2	100322740560	Gasket - Bubbler
3	101514331640	Push Bar Insert
4	26664C	Basin
5	22900C	Bracket - Front Push
6	22901C	Bracket - Side Push
7	23003C	Bracket - Regulator Mounting
8	26976C	Panel - Bottom Dispenser
9	26600C	Panel - Front (Stainless Steel)
10	28079C	Panel - Left Side (Stainless Steel)
11	28083C	Panel - Right Side (Stainless Steel)
12	40045C	Hex Nut
13	50212C	Rivet - Drive Type
14	50986C	Regulator Holder
15	51531C	Pivot Block
16	51544C	Bubbler - Chrome
17	55859C	Push Bar
18	61314C	Regulator
19	70935C	Screw - Shoulder x 1/2" Lg.
20	55996C	Strainer
21	15008C	Bubbler Nipple
22	40575C	Strainer & Ferrule Assy
23	50074C	Gasket - Tailpipe
24	40572C	Tailpipe
25	55994C	Tube-Poly 1/4 x .040 Wall

TROUBLE SHOOTING AND MAINTENANCE

Orifice Assy: Mineral deposits on orifice can cause water flow to spurt or not regulate. Mineral deposits may be removed from the orifice with a small round file not over 1/8" diameter or small diameter wire. **CAUTION: DO NOT FILE OR CUT ORIFICE MATERIAL.**

Stream regulator: If orifice is clean, regulate flow as in "START UP" instructions on page 3. If replacement is necessary, see parts list for correct regulator part number.

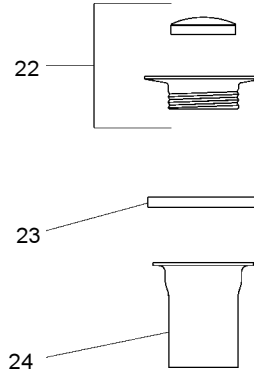
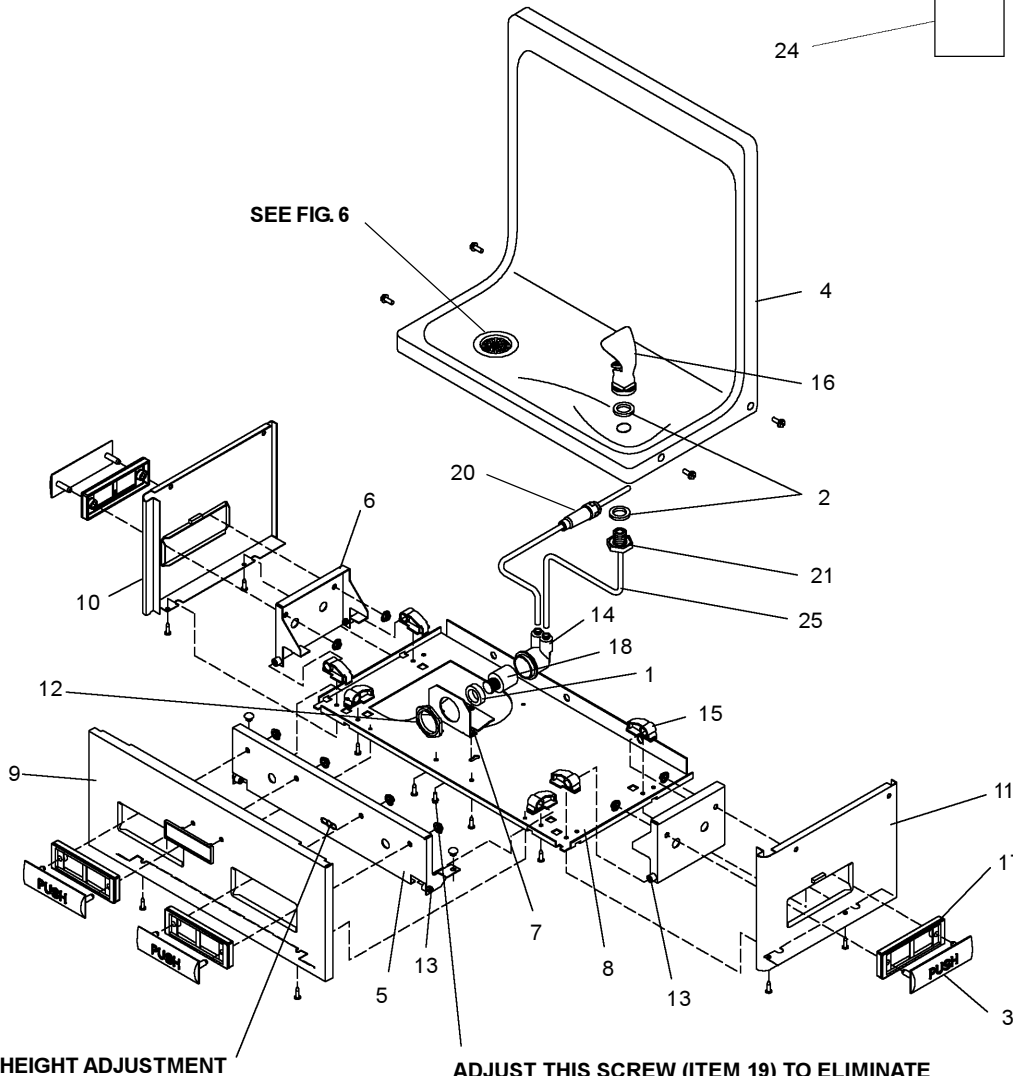


FIG. 6

FIG. 5



ADJUST THIS SCREW (ITEM 19) TO ELIMINATE MECHANISM "FREE PLAY" OR CONTINUOUS FLOW FROM BUBBLER CONDITIONS.

Halsey Taylor

2222 CAMDEN COURT
OAK BROOK, IL 60523
630.574.3500

PRINTED IN U.S.A.

FOR PARTS, CONTACT YOUR LOCAL DISTRIBUTOR OR CALL 1.800.323.0620