



Water Coolers

VANDAL RESISTANT BARRIER-FREE VERSACOOLER® II

PV8AC, Mechanical Activation

Suggested Specification

Model PV8AC shall deliver 8.0 gph of 50°F water at 90°F ambient and 80°F inlet water. Model PV8AC shall include a single vandal resistant push button to **Mechanically activate the flow of water** **electricity is not required.** Basin shall be designed to eliminate splashing and standing water. Bubbler shall be vandal resistant, have a flexible guard and operate between 20 and 120 psi. Cabinet finish shall be brushed stainless steel. Cabinet shall have perforated galvanized steel screens covering all openings to prevent objects from being inserted into the cooler. Cooling system shall use R-134a refrigerant. Shall comply with ANSI A117.1 and ADA. Shall be listed by Underwriters' Laboratories to U.S. and Canadian standards. Shall comply with ANSI/NSF 61.

Models

PV8AC delivers 8.0 gallons of chilled drinking water per hour. This model satisfies CABO/ANSI A117.1 and complies with ADA requirements when properly installed. Model also meets guidelines for children's accessibility providing the floor to orifice height is 30 inches and proper clear floor space is provided for frontal approach.

Standard Features

- > Built-in 100 micron strainer stops particles before they enter the waterway
- > Waterways are lead-free in materials & construction
- > Stainless Steel top
- > Vandal resistant bubbler with flexible guard
- > Heavy Duty galvanized steel frame
- > Galvanized Steel screens welded to inside of side vents and bottom vent hole
- > High Efficiency cooling tank and coil
- > Refrigerant R-134a
- > Vandal resistant front push button
- > Vandal resistant fasteners
- > External stream height adjustment



Finishes

- > Standard cabinet finish: Brushed Stainless Steel

Options (at additional cost)

- > Stainless Steel Bubbler

Installation

- > Prior to roughing, consult with local, state and federal codes for proper mounting height
- > Shipped with complete instructions and wall mounting bracket
- > Removable side and front panels provide easy access for installation



ADA Compliant when installed in an alcove, or with an accessory apron, or with a right wing wall for a right high unit or left wing wall for a left high unit.



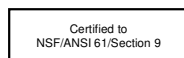
Components in this fountain are lead free as defined by the Safe Drinking Water Act Amendments of 1986, and the Lead Contamination Control Act of 1988.

Powder Coated Finish Warranty (Continental limits of the United States and Canada): Three years on the powder coat finish provided that the water cooler has not been subjected to abuse, misuse or alteration.

Limited 5-Year Warranty (Continental limits of the United States and Canada): Five years on the sealed refrigeration system and most component parts. Detailed warranty certificate enclosed with each water cooler; sample available upon request.

Export Warranty: One year on component parts. Detailed warranty certificate enclosed with each drinking fountain; sample copy available upon request.

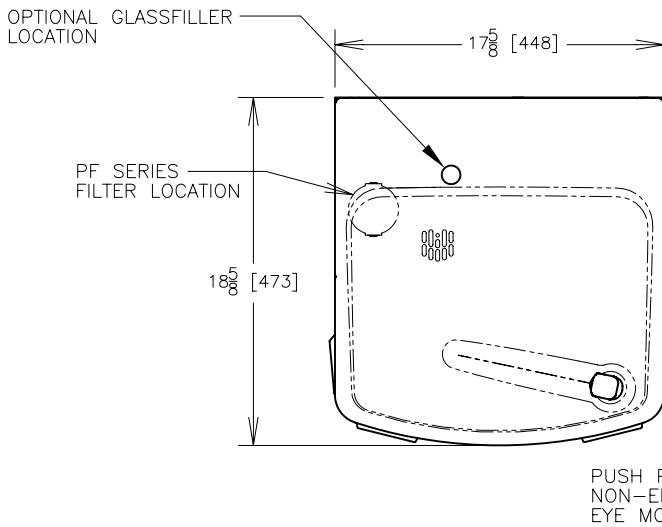
Models covered by this specification complies with all known Plumbing Codes. Listed by Underwriters' Laboratories to U.S. and Canadian standards.



Model	50°F Drinking Water 90°F Ambient Air Temperature*			Hot 'N Cold™ Model	115 Volts, 60 Hz			Glass Filler Acces. Option	Cabinet Finish Options	Net Wt. Approx.
	Rated Capacity GPH	Base Rate GPH	Pre-Cooler		Compr. HP	Full Load Amps	Rated Watts			
PV8AC	8.0	8.0	No	No	1/4	4.6	460	No	No	84 lbs.

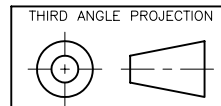
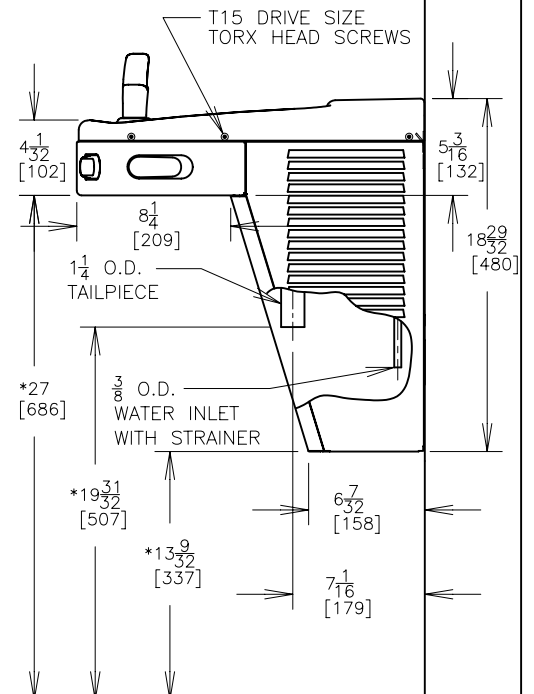
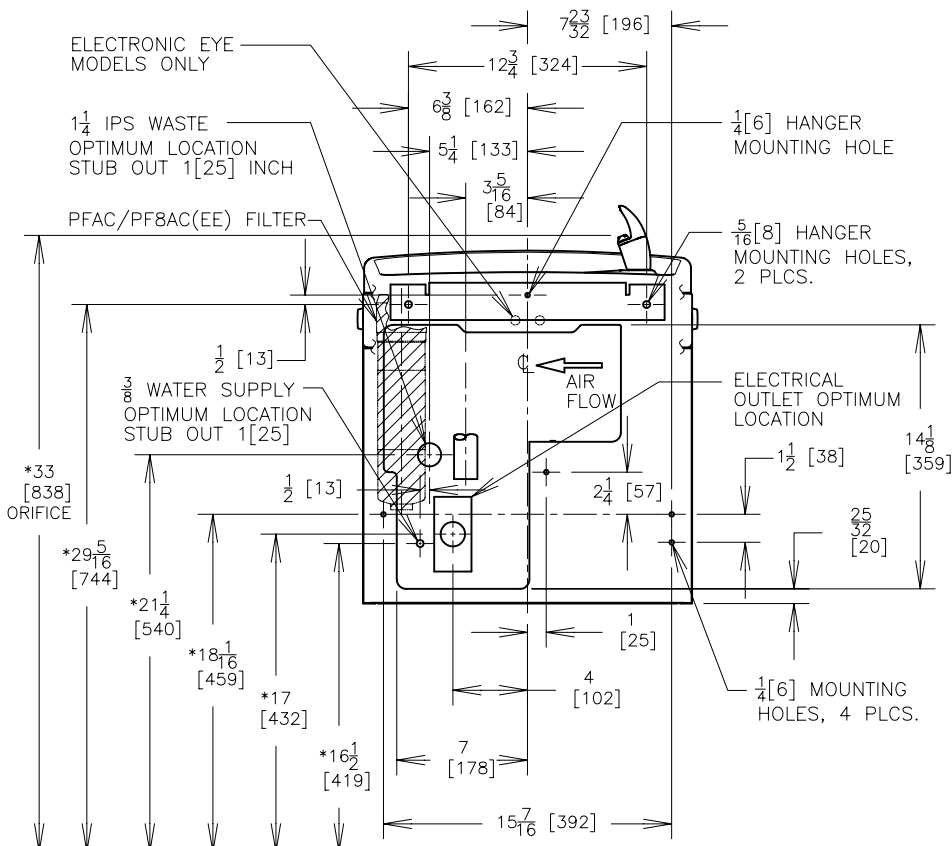
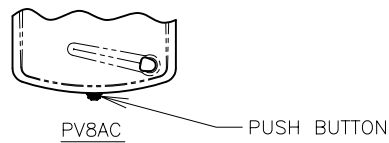
* Industry Standard Rating Condition 80°F inlet water temperature
Specifications subject to change without notice

OASIS® BARRIER-FREE Versacooler® II MODELS P8AC, PAC, P8ACEE, PF8AC, PFAC, PF8ACEE, PV8AC



NOTES:

1. TRAP, STOP VALVE AND ELECTRICAL OUTLET NOT FURNISHED.
2. ALLOW 4 INCHES [102 MM] MIN. PER SIDE FOR VENTILATION.
- *3. RECOMMENDED ADULT BARRIER FREE HEIGHT INSTALLATION SHOWN. REDUCE HEIGHT BY 3 INCHES FOR INSTALLATIONS USED PRIMARILY BY CHILDREN AGES 12 AND YOUNGER. UNIT SHALL ALSO HAVE A MINIMUM CLEAR FLOOR SPACE 30[760] BY 48[1220]. ADJUST VERTICAL DIMENSIONS AS REQ'D TO COMPLY WITH FEDERAL, STATE, AND LOCAL CODES.
4. ALL DIMENSIONS ARE IN INCHES. DIMENSIONS IN BRACKETS [] ARE IN MILLIMETERS.



ROUGHING-IN AND DIMENSIONAL DRAWING