

HALSEY TAYLOR OWNERS MANUAL

BI-LEVEL BARRIER FREE COOLER

USES HFC-134A REFRIGERANT

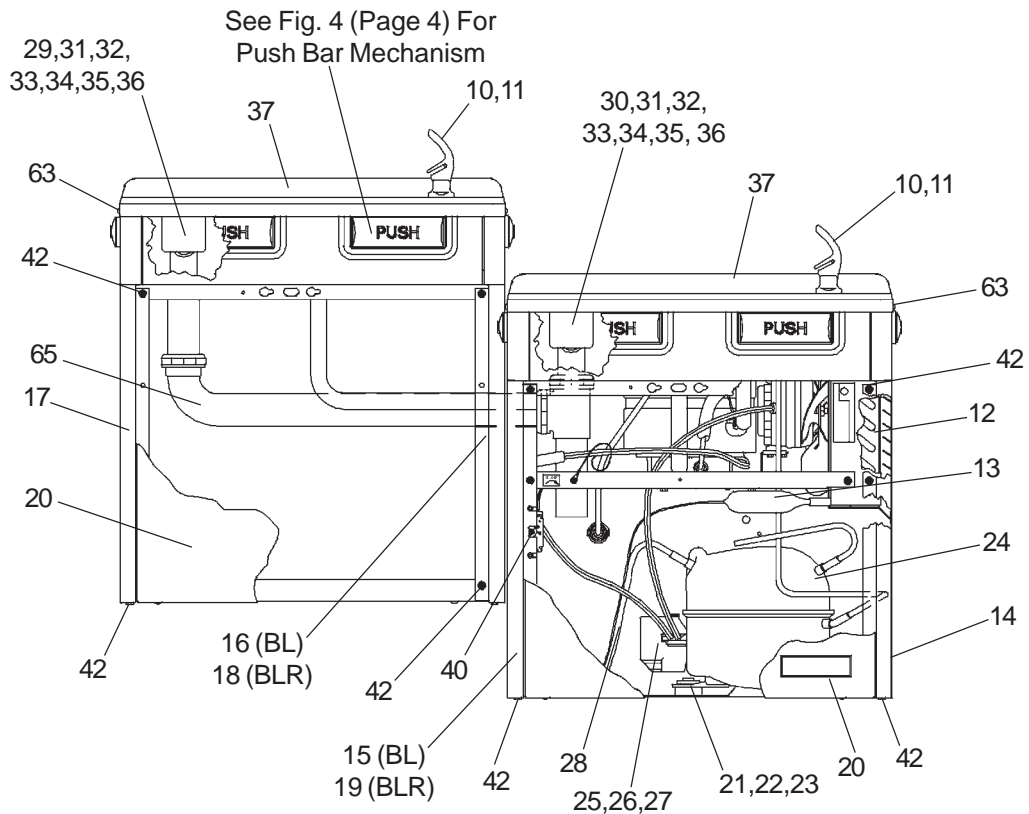
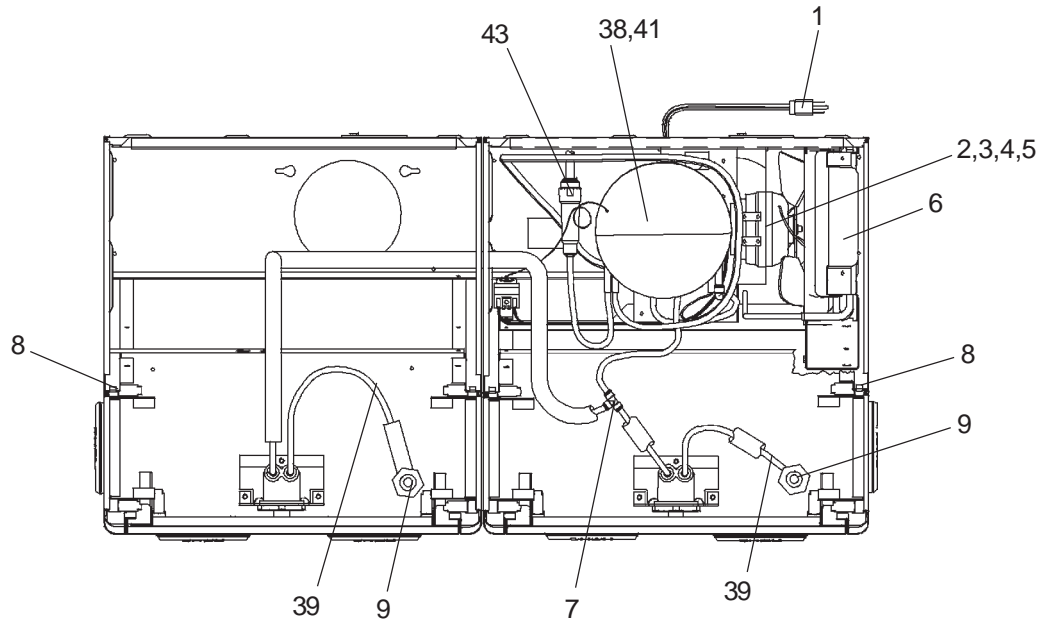


FIG. 1
HAC8FSCBL SHOWN

NOTE: Non-refrigerated units do not include all electrical and refrigeration components shown above. Other components and rough-in are the same as shown.

HAC8FSCBL

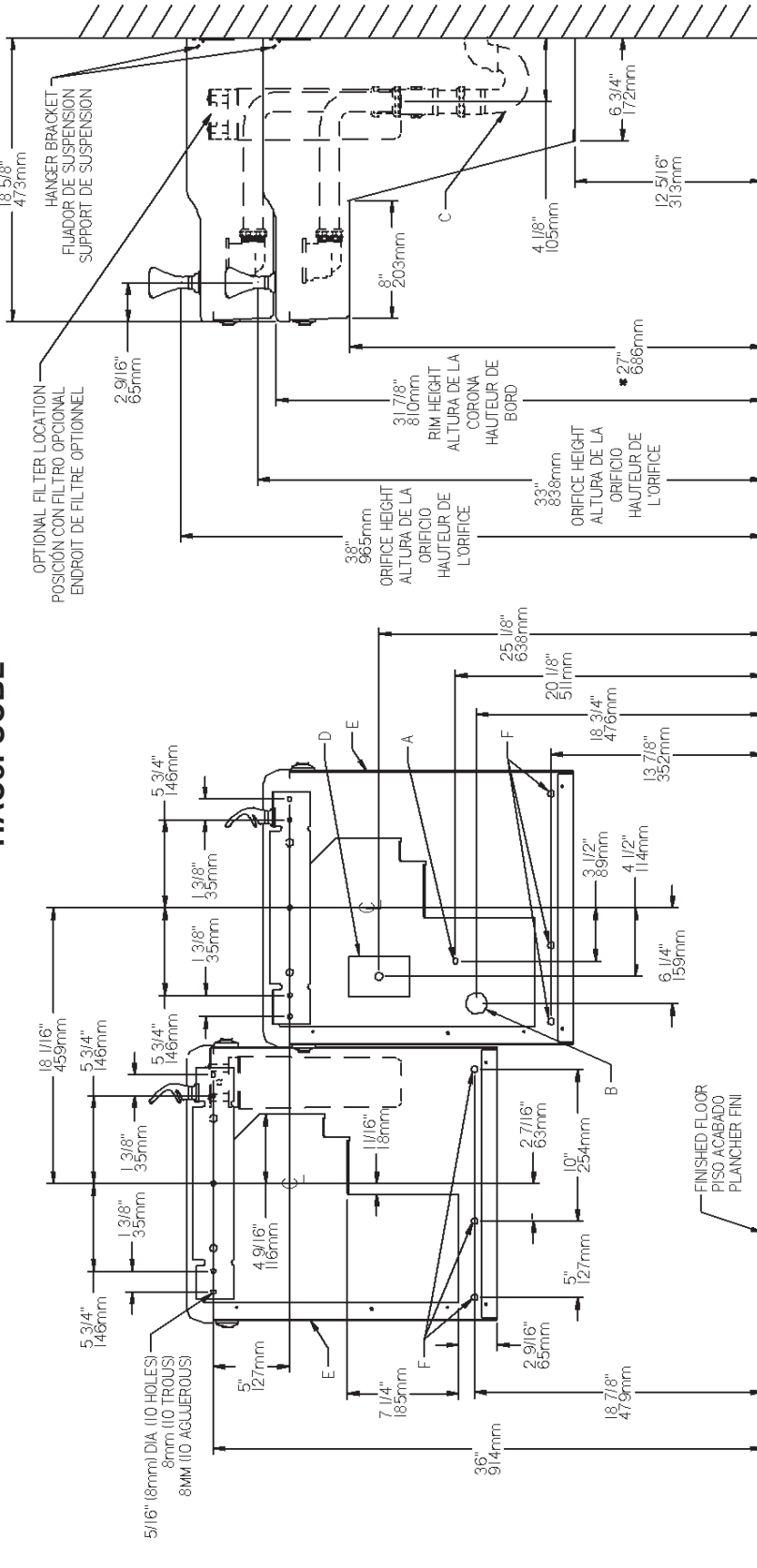


FIG. 2

REDUCE HEIGHT BY 3" FOR INSTALLATION OF CHILDRENS ADA COOLER

*** ADA REQUIREMENT
 * REQUISITO DE A.D.A.
 * EXIGENCE ADA**

- LEGENDA/LEYENDA/LÉGENDE**
- A = RECOMMENDED WATER SUPPLY LOCATION. SHUT OFF VALVE (NOT FURNISHED) TO ACCEPT 3/8 O.D. UNPLATED COPPER TUBE.**
 POSICIÓN DE ABASTECIMIENTO DE AGUA RECOMENDADA. VÁLVULA CERRADA (NO AMUEBLADO) PARA ACEPTAR 3/8" O.D. TUBO DE COBRE NO PLATEADO.
 ENDROIT D'APPROVISIONNEMENT EN EAU RECOMMANDÉ. LA VALVE ARRÊTÉE (NON FOURNI) POUR ACCEPTER 3/8" PO. (9.5mm) TUBE COULLEUR. CUIVRE NON PLAQUÉ.
 - B = RECOMMENDED LOCATION FOR WASTE OUTLET 1-1/2" O.D. DRAIN**
 UBICACION RECOMENDADA PARA EL DRENAJE DE SALIDA DE AGUA, DE 1-1/2" DE DIÁMETRO.
 EMPLACEMENT RECOMMANDÉ POUR LE DRAIN DE D.E. 1-1/2" DE SORTIE D'EAU.
 PURGADOR DE 1-1/2" NO PROPORCIONADO**
 SIPHON 1-1/2" NON FOURNI**
 - D = ELECTRICAL SUPPLY (3) WIRE RECESSED BOX**
 CAJA RECESIVA DE ALAMBRES (3) DE SUMINISTRO ELÉCTRICO
 BOÎTE ENCASTRÉE D'ALIMENTATION ÉLECTRIQUE (3) FILS
 - E = INSURE PROPER VENTILATION BY MAINTAINING 6" (152 mm) (MIN.) CLEARANCE FROM CABINET LOUVERS TO WALL**
 ASEGURE UNA VENTILACION ADECUADA MANTENIENDO UN ESPACIO E 6" (152 mm) (MÍN.) ENTRE LES ÉVÉNENTS DE L'ENCEINTE ET LE MUR.
 ASSUREZ-VOUS UNE BONNE VENTILATION EN GARDANT 6" (152 mm) (MIN.) ENTRE LES ÉVÉNENTS DE L'ENCEINTE ET LE MUR.
 - F = 7/16 BOLT HOLES FOR FASTENING UNIT TO WALL**
 AGUJEROS DE LAS TUERCAS DE 7/16 PARA SUJETAR LA UNIDAD A LA PARED
 TROUS D'ÉCROUS 7/16 POUR FIXER L'APPAREIL AU MUR

HAC8FSCBLR

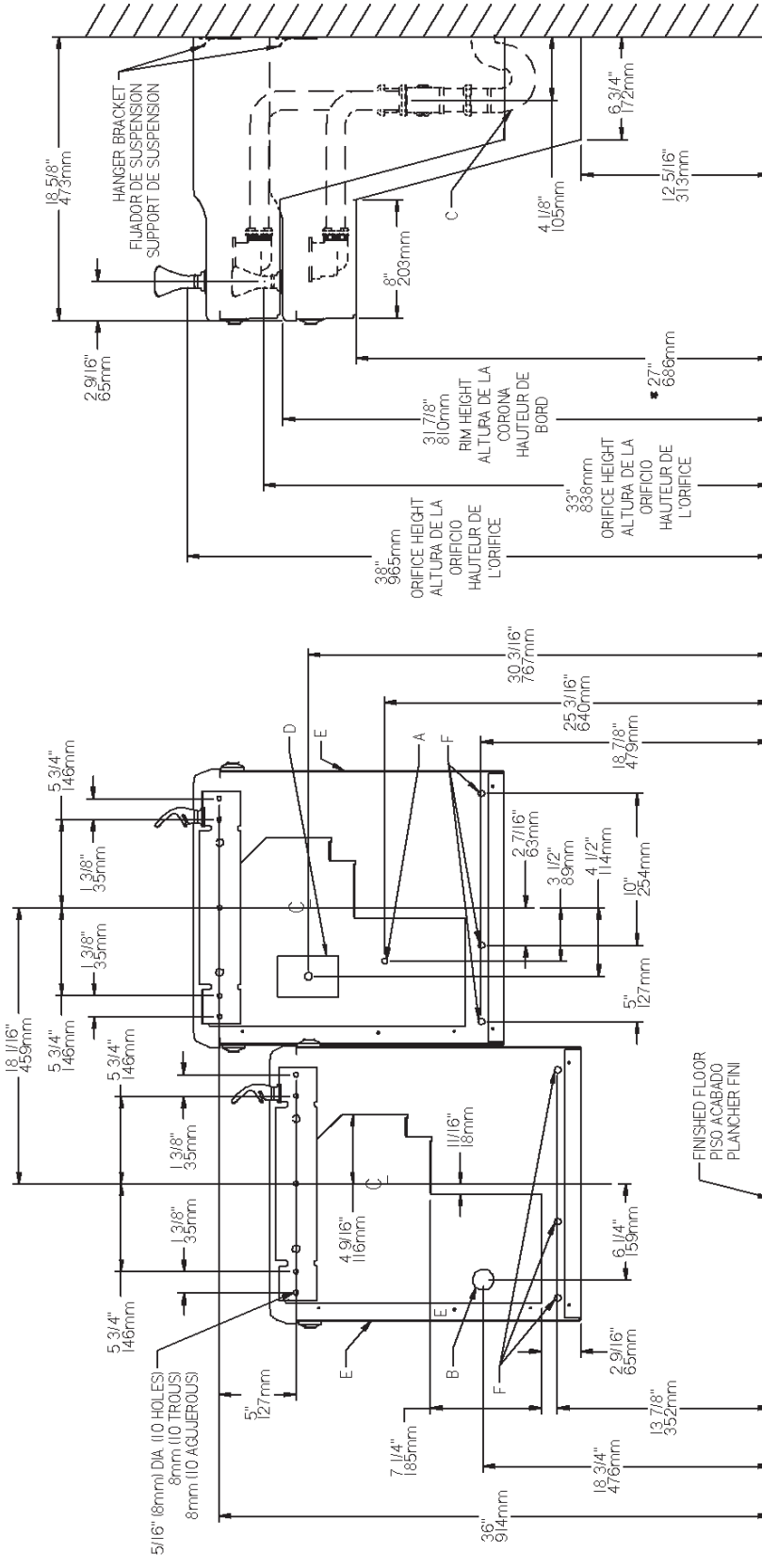


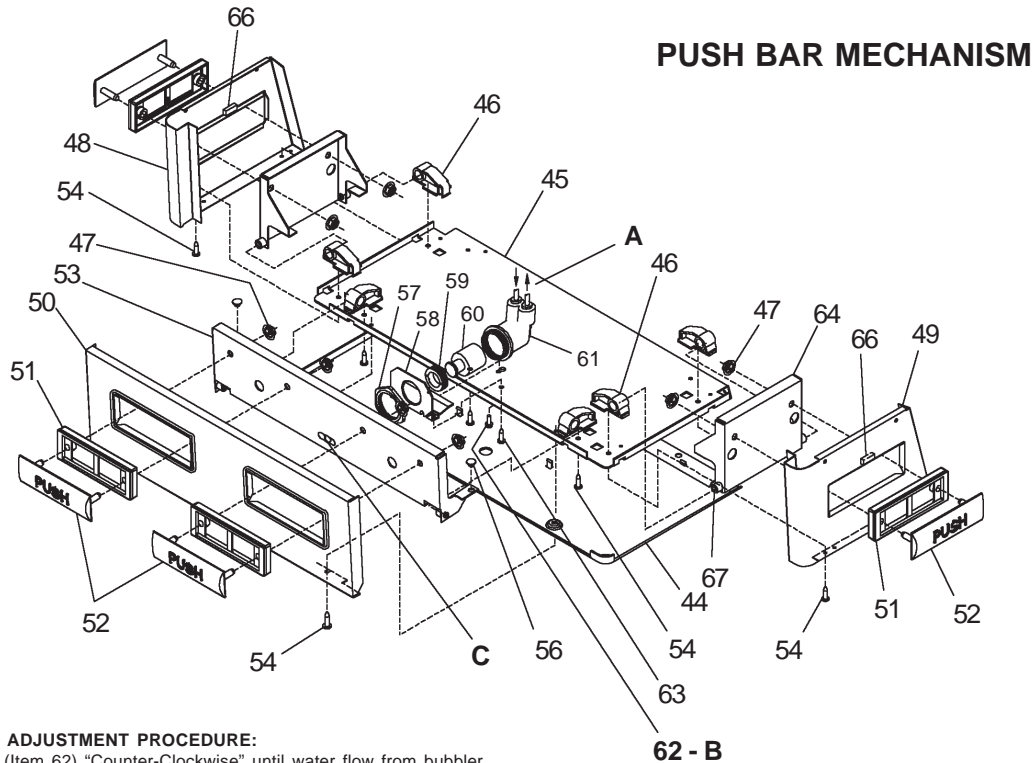
FIG. 3

REDUCE HEIGHT BY 3" FOR INSTALLATION OF CHILDRENS ADA COOLER

* ADA REQUIREMENT
 * REQUISITO DE A.D.A.
 * EXIGENCE ADA

LEGEND/LEYENDA/LEGENDE

- A = RECOMMENDED WATER SUPPLY LOCATION. SHUT OFF VALVE (NOT FURNISHED) TO ACCEPT 3/8 O.D. UNPLATED COPPER TUBE. POSICION DE ABASTECIMIENTO DE AGUA RECOMENDADA. VALVULA CERRADA (NO AMUEBLADO) PARA ACEPTAR 3/8" O.D. TUBO DE COBRE NO PLATEADO. ENDROIT D'APPROVISIONNEMENT EN EAU RECOMMANDÉ. LA VALVE ARRÊTÉE (NON FOURNI) POUR ACCEPTER 3/8" PO. (9,5mm) TUBE COULEUR CUIVRE NON PLAQUÉ.
- B = RECOMMENDED LOCATION FOR WASTE OUTLET 1-1/2" O.D. DRAIN UBICACION RECOMENDADA PARA EL DRENAJE DE SALIDA DE AGUA. DE 1-1/2 DE DIÁMETRO. EMPLACEMENT RECOMMANDÉ POUR LE DRAIN DE D.E. 1-1/2 DE SORTIE D'EAU.
- C = 1-1/2" TRAP NOT FURNISHED** PURGADOR DE 1-1/2" NO PROPORCIONADO** SIPHON 1-1/2" NON FOURNI**
- D = ELECTRICAL SUPPLY (3) WIRE RECESSED BOX CAJA RECESADA DE ALAMBRES (3) DE SUMINISTRO ELÉCTRICO BOÎTE ENCASTRÉE D'ALIMENTATION ÉLECTRIQUE (3) FILS
- E = INSURE PROPER VENTILATION BY MAINTAINING 6" (152 mm) (MIN.) CLEARANCE FROM CABINET LOUVERS TO WALL. ASEGURE UNA VENTILACION ADECUADA MANTENIENDO UN ESPACIO E 6" (152 mm) (MIN.) ENTRE LES ÉVENTS DE L'ENCEINTE ET LE MUR. ASSUREZ-VOUS UNE BONNE VENTILATION EN GARDANT 6" (152 mm) (MIN.) ENTRE LES ÉVENTS DE L'ENCEINTE ET LE MUR.
- F = 7/16 BOLT HOLES FOR FASTENING UNIT TO WALL. AGUJEROS DE LAS TUERCAS DE 7/16 PARA SUJETAR LA UNIDAD A LA PARED TROUS D'ECROUS 7/16 POUR FIXER L'APPAREIL AU MUR



Water Valve Mechanism - ADJUSTMENT PROCEDURE:

- Turn adjustment screw (Item 62) "Counter-Clockwise" until water flow from bubbler starts.
- Turn adjustment screw "Clockwise" until water flow stops, THEN turn an additional 1/2 turn.

NOTE: Adjustments stated above are viewed from underneath unit (bottom side of dispenser panel Item 45)

NOTE: If continuous flow occurs at the end of the compressor cycle, turn cold control (Item 40) counterclockwise 1/4 turn.

LEGEND

- A) Note: Water flow direction
- B) Adjust this screw to eliminate mechanism "Free Play" or continuous flow from bubbler conditions. (See ADJUSTMENT PROCEDURE)
- C) Stream height adjustment (see note #8)

FIG. 4

IMPORTANT
ALL SERVICE TO BE PERFORMED BY AN
AUTHORIZED SERVICE PERSON

HANGER BRACKETS & TRAP
INSTALLATION

- 1) Remove hanger brackets fastened to back of cooler by removing one (1) screw.
 - 2) Mount the hanger brackets and trap as shown in Figures 2 or 3.
- NOTE:** Hanger Brackets **MUST** be supported securely. Add fixture support carrier if wall will not provide adequate support.

IMPORTANT:

- 4 1/8 in. (105mm) dimension from wall to centerline of trap must be maintained for proper fit.
 - Anchor hanger securely to wall using all five (5) 5/16" dia. mounting holes.
- 3) Install straight valve for 3/8" O.D. tube.

INSTALLATION OF COOLER

- 4) Hang the cooler on the hanger bracket. Be certain the hanger bracket is engaged properly in the slots on the cooler back as shown in Fig. 5.
- 5) Loosen the two (2) screws holding the lower front panel at the bottom of cooler base and two (2) screws at the top. Remove the front panel and set aside.
- 6) Connect water inlet line--See Note 4 of General Instructions.
- 7) Remove the slip nut and gasket from the trap and install them on the cooler waste line making sure that the end of the waste line fits into the trap. Assemble the slip nut and gasket to the trap and tighten securely.

START UP

Also See General Instructions

- 8) Stream height is factory set at 45-50 PSI. If supply pressure varies greatly from this, readjust stream height to approximately 1-1/2" (38mm) above the bubbler guard by turning adjustment screw, accessible by removing front push panel. Item No. 50 (see Fig. 4 & 6).
- 9) Replace the front panel and secure by retightening four (4) screws.
- 10) If a taste, odor or sediment problem is prevalent, try installing our water filter module.

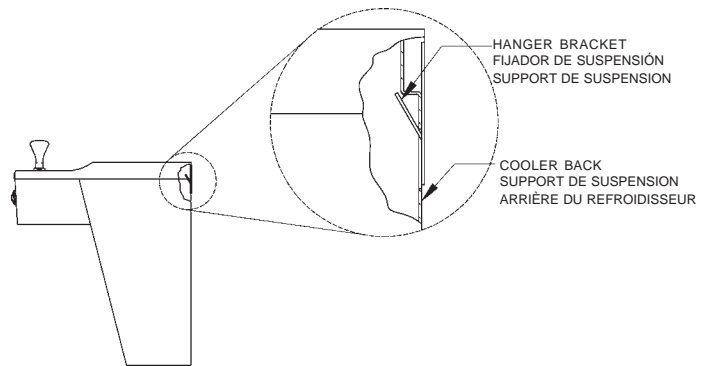
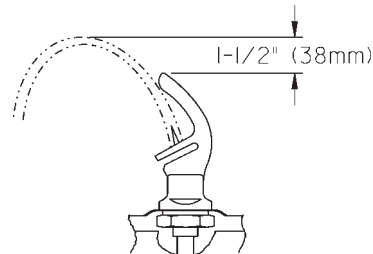


FIG. 5



CORRECT STREAM HEIGHT

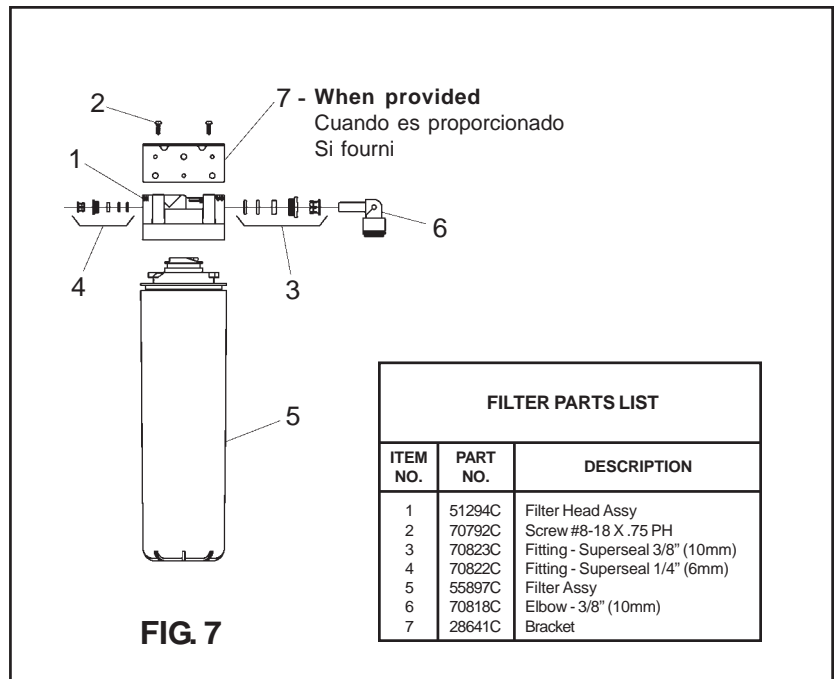
FIG. 6

ITEMIZED PARTS LIST

ITEM NO	PART NO	DESCRIPTION
1	36208C	Power Cord
2	30664C	Fan Blade
3	70018C	Hex Nut - Fan Blade
4	31490C	Fan Motor
5	70009C	Screw - (Fan Motor)
6	56237C	Shroud - Fan
7	70682C	Fitting - Tee 1/4"
8	75524C	Clip (Front and Rear Panels)
9	56159C	Nipple - Bubbler
10	51544C	Bubbler - Chrome
11	100322740560	Gasket - Bubbler (upper and lower)
12	66743C	Condenser
13	66703C	Drier
14	See Color Table	Panel - Right Rear BL(R) (Refrig. Unit)
15	See Color Table	Panel - Left Rear BL (Refrig. Unit)
16	See Color Table	Panel - Right Rear BL (Left Unit)
17	See Color Table	Panel - Left Rear BL(R) (Left Unit)
18	See Color Table	Panel - Right Rear BLR (Left Unit)
19	See Color Table	Panel - Left Rear BLR (Refrig. Unit)
20	See Color Table	Panel - Front Lower
21	101516143550	Stud - Compressor Mtg.
22	100806740570	Grommet - Compressor Mtg.
23	19037000	Clip - Compressor Mtg.
*24	36094C	Compressor Serv. Pak EMI 70 HNR
25	35959C	Relay
26	35768C	Cover - Relay
27	36158C	Overload
28	66576C	Heat Exchanger
29	66758C	Waste Line
30	66759C	Waste Line
31	75589C	Gasket
32	56121C	Fitting - Elbow 1-1/4
33	75588C	Nut - Slip Joint 1-1/4
34	100147140560	Gasket - Drain
35	102639931640	Drain Plug - Chrome
36	160270508640	Strainer Plate - Chrome
37	28702C	Basin - Stainless Steel
38	75583C	Elbow - 5/16" x 1/4"
39	56092C	Tubing - Poly (Cut To Length)
40	31513C	Cold Control
41	66534C	Evaporator Assembly
42	70002C	Screw - #10 x 1/2" Lg. HHSM
43	55996C	Strainer
44	55931C	Cover - Dispenser Bottom
45	22897C	Panel - Bottom Dispenser
46	51531C	Block - Pivot
47	111411743620	Nut - 1/4, Self-Threading
48	See Color Table	Panel - Left Side
49	See Color Table	Panel - Right Side
50	See Color Table	Panel - Front Push
51	55859C	Pushbar - Side & Front
52	55947C	Insert - Push Bar, Gray
53	22900C	Bracket - Front Push
54	70864C	Screw - #8 x 5/8" Lg. Torx/Slot
55	50212C	Rivet - Drive Type
56	51667C	Bumper - Press Bar
57	40045C	Hex Nut
58	23003C	Bracket - Regulator Mounting
59	15005C	Retaining Nut
60	61314C	Regulator
61	50986C	Holder - Regulator
62	70935C	Screw - Shoulder x 1/2" Lg.
63	75532C	Screw - #10-16 x .63 THSM
64	22901C	Bracket - Side Push
65	40022C	Drain Tube Assembly
66	50129C	Bumper
67	50212C	Rivet - Drive Type
NS	28551C	Hanger Bracket

COLOR TABLE							
PANEL COLOR	Item No. 14 Part No. Refrig. unit	Item No. 15 Part No. Refrig. unit	Item No. 16 Part No. Left unit	Item No. 17 Part No. Left unit	Item No. 18 Part No. Left unit	Item No. 19 Part No. Refrig. unit	Item No. 20 Part No.
Platinum Vinyl	28144C	28161C	28709C	28148C	28715C	28712C	22844C
Stainless Steel	28525C	28536C	28539C	28528C	28559C	28562C	22955C

COLOR TABLE - PUSH BAR MECHANISM			
PANEL COLOR	Item No. 48 Part No.	Item No. 49 Part No.	Item No. 50 Part No.
Platinum Vinyl	28127C	28123C	28705C
Stainless Steel	28128C	28124C	28706C



FILTER PARTS LIST		
ITEM NO.	PART NO.	DESCRIPTION
1	51294C	Filter Head Assy
2	70792C	Screw #8-18 X .75 PH
3	70823C	Fitting - Superseal 3/8" (10mm)
4	70822C	Fitting - Superseal 1/4" (6mm)
5	55897C	Filter Assy
6	70818C	Elbow - 3/8" (10mm)
7	28641C	Bracket

FIG. 7

***REPLACE WITH SAME COMPRESSOR USED IN ORIGINAL ASSEMBLY.**

NOTE: All correspondence pertaining to any of the above water coolers or orders for repair parts MUST include Model No. and Serial No. of cooler, name and part number of replacement part.

Halsey Taylor

2222 CAMDEN COURT
 OAK BROOK, IL 60523
 630.574.3500

PRINTED IN U.S.A.

FOR PARTS CONTACT YOUR LOCAL DISTRIBUTOR OR VISIT OUR WEBSITE - WWW.HALSEYTAYLOR.COM