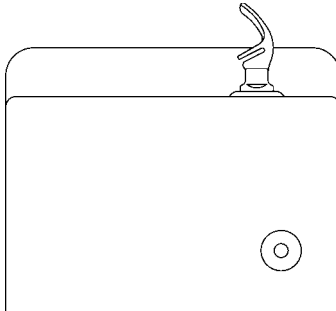


Halsey Taylor Owners Manual

Models: 5905AC
Freeze Resistant Fountain



Installer

To assure you install this model easily and correctly, PLEASE READ THESE SIMPLE INSTRUCTIONS BEFORE STARTING THE INSTALLATION. CHECK YOUR INSTALLATION FOR COMPLIANCE WITH PLUMBING, ELECTRICAL AND OTHER APPLICABLE CODES. After installation, leave these instructions inside the fountain for future reference.

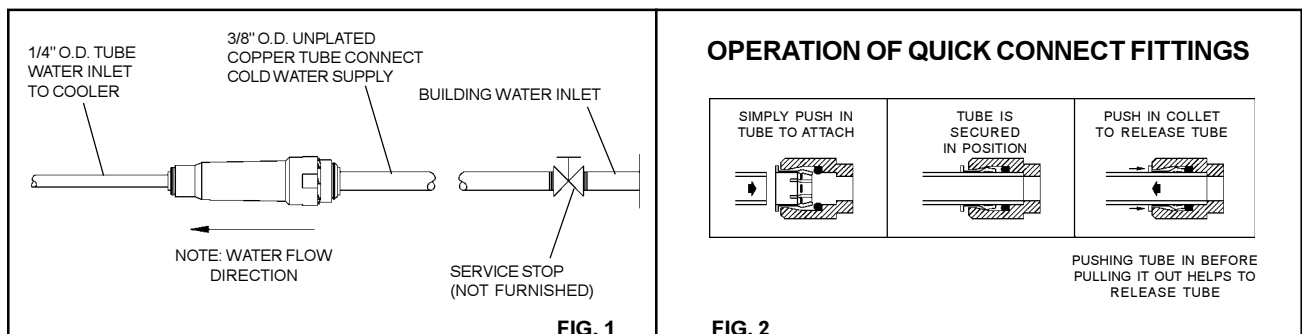
This Freeze Resistant Fountain is shipped in two separate cartons. The second carton contains the Freeze Resistant Package that is installed on an interior heated wall. Refer to the Freeze Resistant Package for the rough-in dimensions for installation.

IMPORTANT

ALL SERVICE TO BE PERFORMED BY AN AUTHORIZED SERVICE PERSON

IMPORTANT! INSTALLER PLEASE NOTE.

THE GROUNDING OF ELECTRICAL EQUIPMENT SUCH AS TELEPHONE, COMPUTERS, ETC. TO WATER LINES IS A COMMON PROCEDURE. THIS GROUNDING MAY BE IN THE BUILDING OR MAY OCCUR AWAY FROM THE BUILDING. THIS GROUNDING CAN CAUSE ELECTRICAL FEEDBACK INTO A FOUNTAIN, CREATING AN ELECTROLYSIS WHICH CAUSES A METALLIC TASTE OR AN INCREASE IN THE METAL CONTENT OF THE WATER. THIS CONDITION IS AVOIDABLE BY USING THE PROPER MATERIALS AS INDICATED. ANY DRAIN FITTINGS PROVIDED BY THE INSTALLER SHOULD BE MADE OF PLASTIC TO ELECTRICALLY ISOLATE THE FOUNTAIN FROM THE BUILDING PLUMBING SYSTEM.



5905AC ROUGH-IN

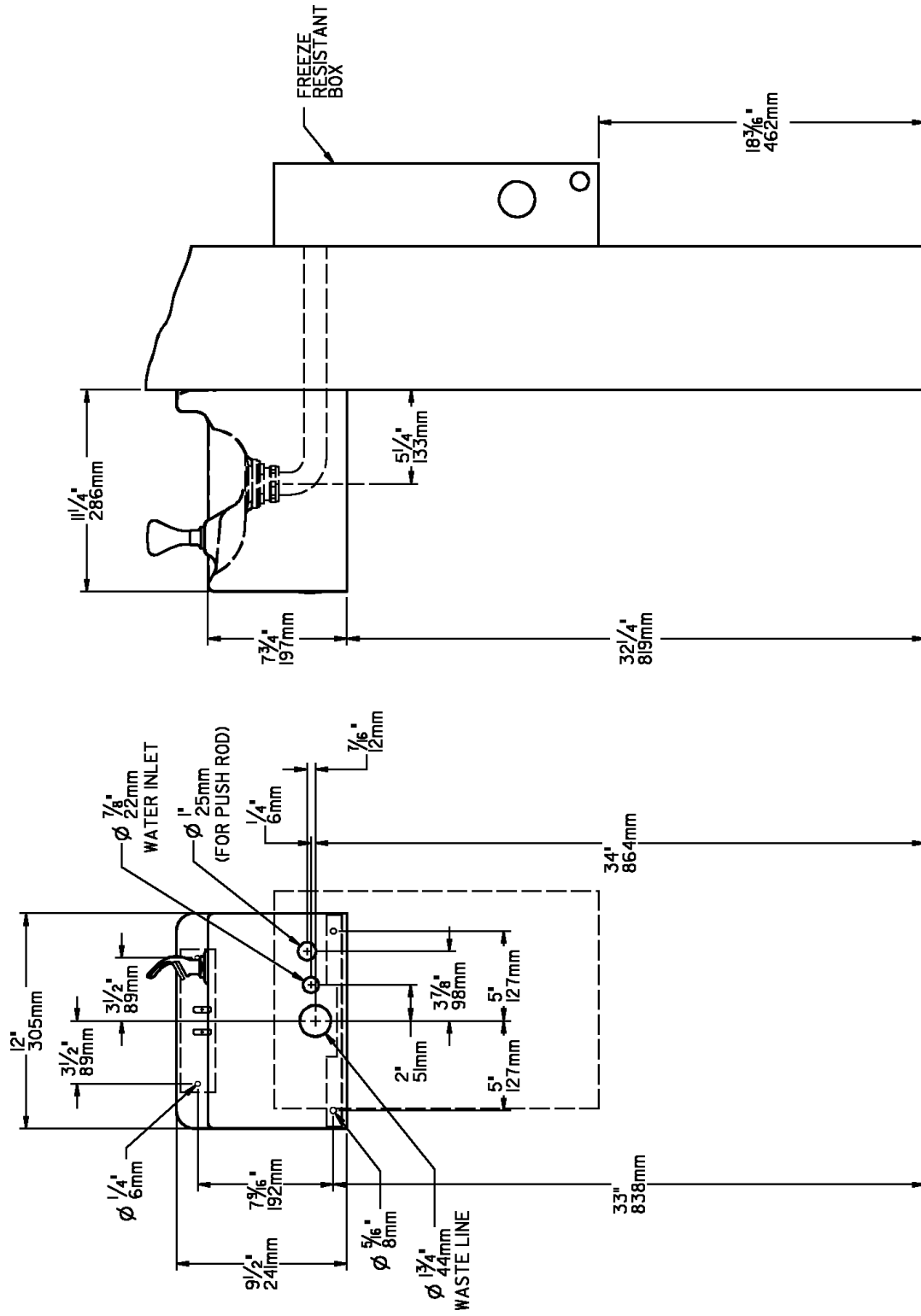


FIG. 3

INSTALLATION INSTRUCTIONS

1. **Wall should already be framed for the fountain using dimensions shown in Fig. 3.**
Shown dimensions pertain to installation location.
2. **Remove bottom cover from fountain and save the screws.** Assemble push rod to fountain.
(Push rod provided with freeze-resistant box)
3. **Install the fountain** using bolts and washers (not provided). Tighten securely.
4. **Attach drain tube** to fountain and cut to required length using the freeze resistant box as a guide.
5. **Install freeze-resistant box** - see box instructions.
6. **Install a service stop (not provided)** and make water supply connection from the stop to the strainer in the freeze-resistant box. **DO NOT SOLDER TUBES INSERTED INTO THE STRAINER AS DAMAGE TO THE O-RINGS MAY RESULT.**
7. **Connect fountain water line to freeze-resistant box** - see box instructions. Replace bottom cover.

STREAM HEIGHT ADJUSTMENT:

Stream height is factory set at 35 PSI. If supply pressure varies greatly from this, adjust screw on regulator in freeze resistant box. Clockwise adjustment will raise stream and counter-clockwise adjustment will lower stream. For best adjustment, stream should hit basin approximately 6-1/2" from the bubbler.

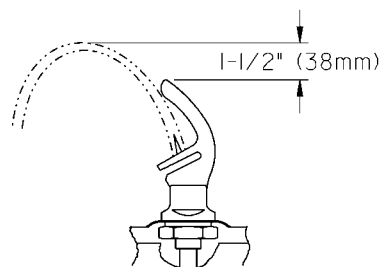


Fig. 4

PARTS LIST		
ITEM NO.	PART NO.	DESCRIPTION
1	100857140740	Gasket
2	100322740560	Gasket - Bubbler
3	100352940560	Gasket-Slip Nut
4	51575C	Ring - Packing
5	110346220550	Locknut
6	160270508640	Strainer Plate
7	160346308640	Slipnut
8	161637308640	Drain Plug
9	22929C	Basin
10	23046C	Cover - Bottom
11	45681C	Tube - Waste
12	51546C	Bubbler
13	55864C	Bushing - Snap 1/2" I.D.
14	66355C	Tube Assy - Bubbler
15	*55000458	Push Button Assy
16	*100813731870	Bushing - Snap
17	*70054C	Nut - Speed
NS	401444343730	Hanger Bracket

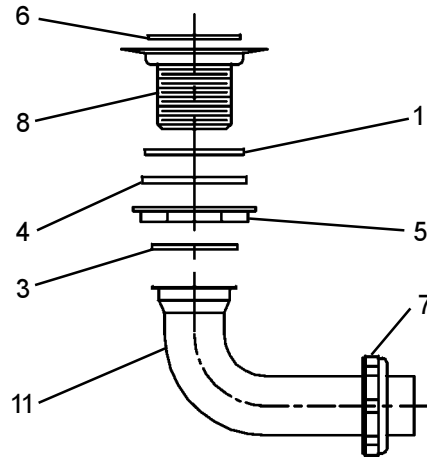
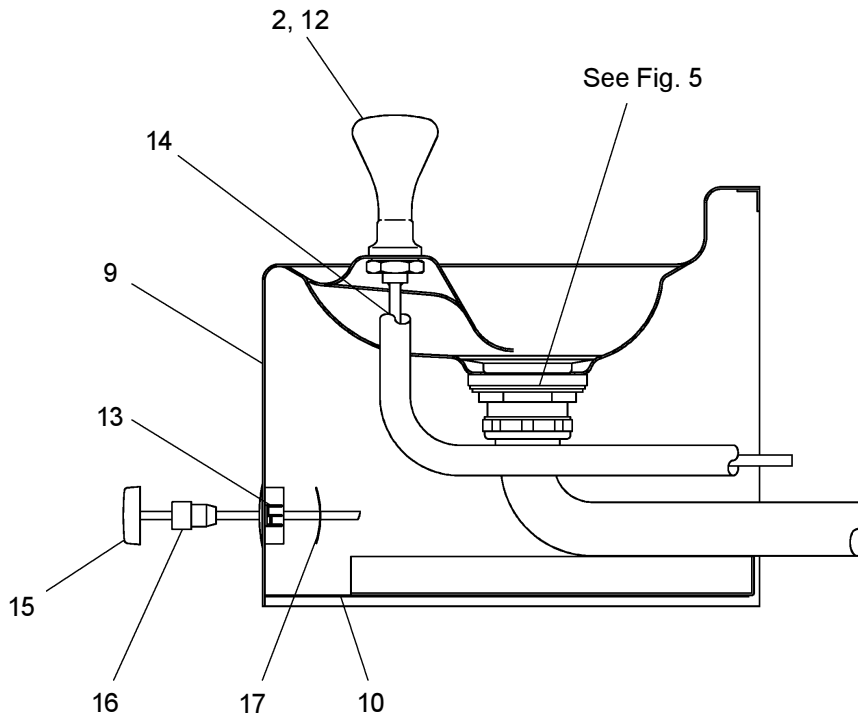


Fig. 5

* PARTS SUPPLIED WITH FREEZE-RESISTANT BOX



Halsey Taylor

2222 CAMDEN COURT
OAK BROOK, IL 60523
630.574.3500

PRINTED IN U.S.A.

FOR PARTS, CONTACT YOUR LOCAL DISTRIBUTOR OR CALL 1.800.323.0620