



Semi-Recessed

Anniversary Fountain

MODEL 2634



This fountain is certified to NSF/ANSI 61.

GENERAL

Semi-recessed fountain, made of White Marblyte™ solid surface non-porous polymer. Contour-formed basin with smooth corners and edges reduces splatter, insures proper drainage and prevents standing waste water.

BUBBLER

Exclusive one-piece, chrome-plated two-stream mound-building bubbler with non-removable anti-squirt feature and integral hood insures a satisfying drink of water.

PUSHBUTTON ACTUATION MECHANISM

Self closing, vandal-resistant pushbutton does not require grasping or twisting.

AUTOMATIC STREAM HEIGHT REGULATOR

Self-closing assembly is located inside unit to prevent tampering. Unit resists corrosion and liming. A constant stream height is automatically maintained under line pressures that vary from 20 to 105 psi.

INLET STRAINER

Easily cleaned in-line strainer screen traps particles of 140 microns or larger before they enter the waterway.

WATER INLET

3/8" O.D. Tubing

DRAIN OUTLET

1-1/4" trap furnished.

SUGGESTED SPECIFICATIONS

Fountain shall include pushbutton on the front, contour-formed basin to eliminate splashing and standing water, and shall have smooth corners and edges. Projector shall be two-stream, mound-building type with integral hood guard and anti-squirt feature. Cooler shall comply with ANSI 117:1 and **ADA for side approach only**. The manufacturer shall certify the unit to meet the requirements of NSF/ANSI 61, and the Safe Drinking Water Act.

Note: Continued product improvement makes specifications subject to change without notice. See Halsey Taylor website for most current spec sheet.



Standard finish is White Marblyte™

Service stop not included.

Shipping weight: 44 lbs.

JOB NAME:	_____

ENGINEER/CONTRACTOR NAME:	_____

APPROVAL:	_____
DATE:	_____



* For parallel approach only

2634

Semi-Recessed Anniversary Fountain

(CONTINUED)

MOUNTING INSTRUCTIONS

Refer to diagrams for rough-in of plumbing and for size of wall cut out. Final check for leaks and correct functions of fountain should be made. (For details see the installation instructions.)

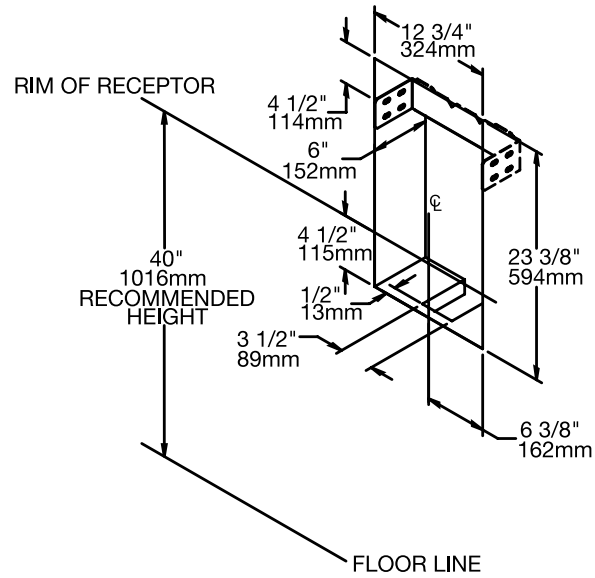
Installation requires trap to be installed in wall. A service stop (not included) must be installed at the fountain inlet line.

OPERATING PRESSURES

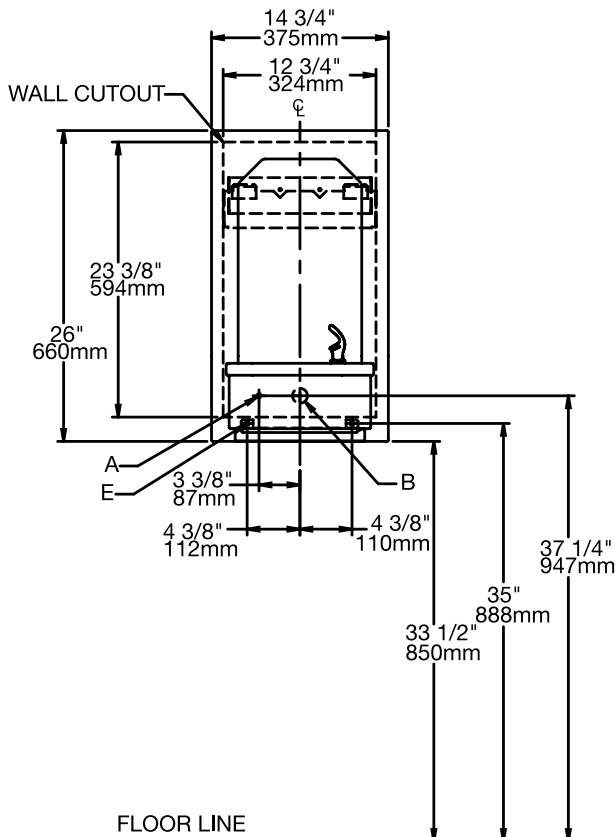
Supply water-105 psi maximum

WALL CUTOUT

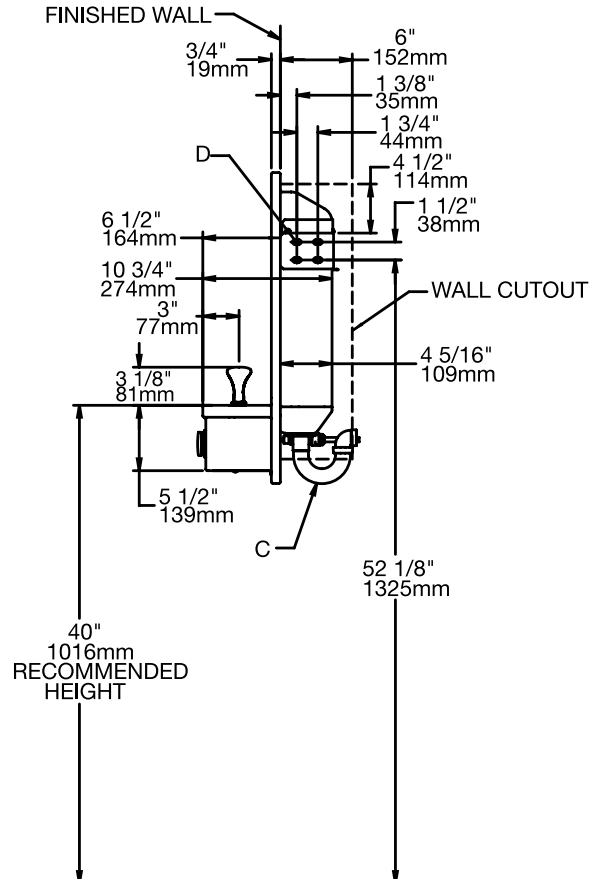
12-3/4" x 23-3/8" x 6"
324mm x 584mm x 152mm



FRONT VIEW



SIDE VIEW



LEGEND:

- A = RECOMMENDED WATER SUPPLY LOCATION 3/8 O.D. UNPLATED COPPER TUBE CONNECT
- B = RECOMMENDED LOCATION FOR WASTE OUTLET 1-1/4" O.D. DRAIN
- C = 1 1/4" O.D. TRAP FURNISHED
- D = 5/16" BOLT HOLES FOR SECURING HANGER BRACKET TO WALL CUTOUT
- E = 5/16" BOLT HOLES FOR SECURING BOTTOM OF FOUNTAIN WITH Z - BRACKET

Halsey Taylor®