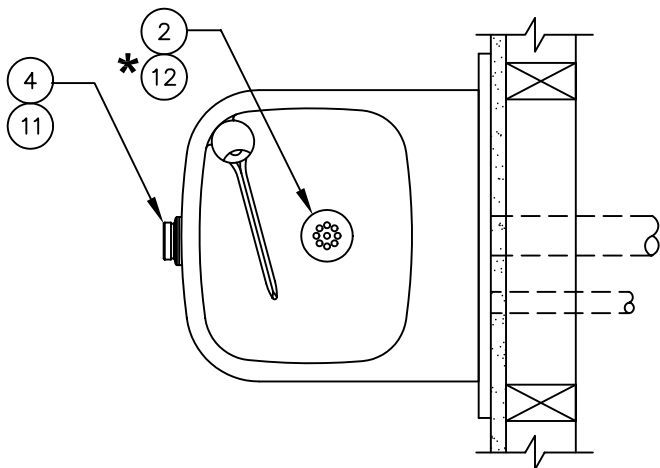
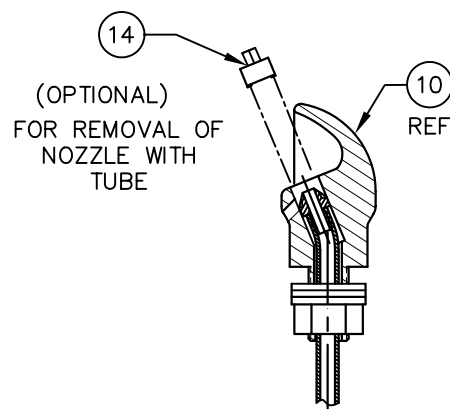
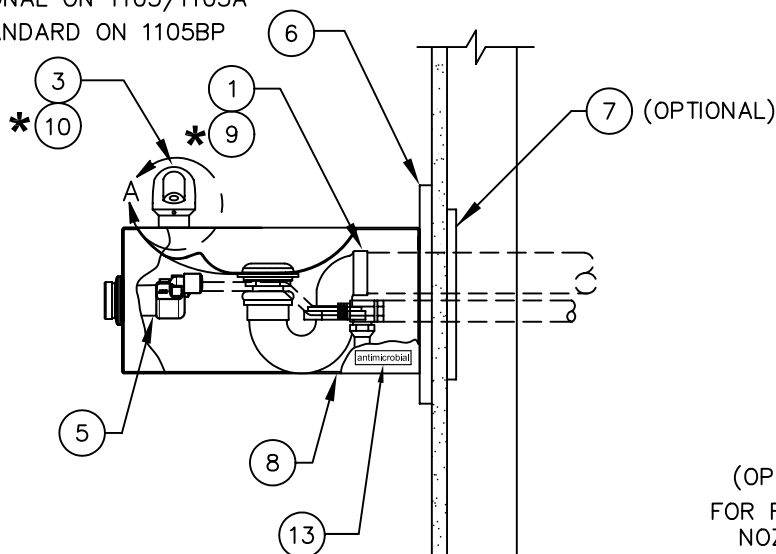


# PARTS BREAKDOWN

ITEM	DESCRIPTION
1	TRAP 0005982900
2	STRAINER ASSEMBLY 6462
3	BUBBLER HEAD 5703M
4	PUSH BUTTON ASSEMBLY PBA6
5	VALVE 5874 SS
6	BACK PANEL BP3
OPTIONAL	7 MOUNTING PLATE 6700
8	ACCESS PLATE PBM1105
* 9	TRAP ANTIMICROBIAL 0005982901
* 10	HEAD ANTIMICROBIAL 5703MA
11	BUTTON PBA6
* 12	STRAINER ANTIMICROBIAL 6462A
13	LABEL ANTIMICROBIAL 0003149795
OPTIONAL	14 DRIVER, NOZZLE .25 HEX 0002082253



OPTIONAL ON 1105/1105A  
STANDARD ON 1105BP



DETAIL A  
ROTATED 90° CW

**NOTE:**

1. ASTERISK (\*) DENOTES PARTS WITH AN ANTIMICROBIAL COATING.

**WHEN ORDERING  
PARTS PLEASE  
SPECIFY YOUR  
MODEL NUMBER**



1455 KLEPPE LANE  
SPARKS, NEVADA 89431  
(775) 359-4712 FAX (775) 359-7424  
E-MAIL: HAWS@HAWS.CO.COM  
WEBSITE: WWW.HAWS.CO.COM

DRAWN BY: F. VASQUEZ	DATE: 04/10/98	CHECK BY:	APPRD BY:	SCALE: 1/4
TITLE: 1105/1105BP/1105A			PART NUMBER: 0002076524	
DRAWING TYPE: PARTS BREAKDOWN			DRAWING NUMBER: 13374C00	REV. 12